

DE JATECH[®]

creators of comfort



Fluecool

REVOLUTIONARY PATENTED FLUE GAS COOLER

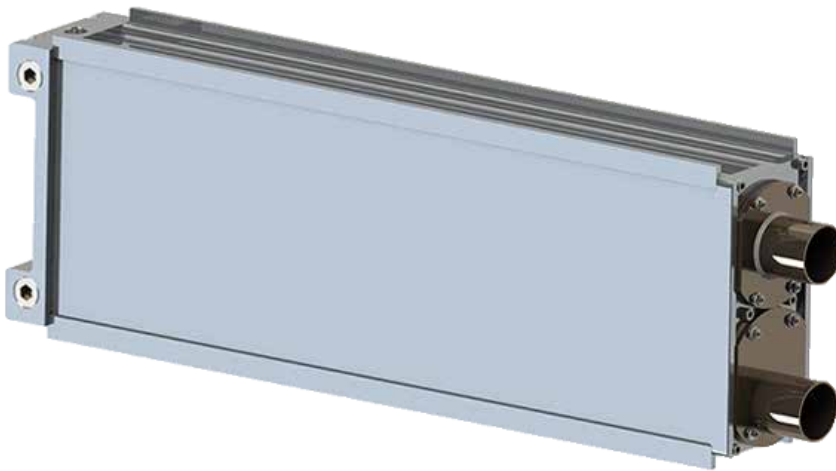
Fluecool

REVOLUTIONARY PATENTED FLUE GAS COOLER

Revolutionary patented flue gas cooler completely assembled by a special adhesive bonding process. Made exclusively from special designed extruded parts. The smooth extruded fin surface makes it extremely suitable for CHP, Stirling, Micro-Turbine and Fuel-Cell applications.

Benefits

- Less sensitive to contamination because of the smooth fin surface.
- Available up to 35 kW in any desired length using the same equipment.
- Greater power can be obtained by parallel switching of units.
- Efficiency can be improved by as much as 9% through condensation of the flue gases.
- Excellent accessibility for cleaning.



FLUECOOL		
Type	Fluecool	unit
Nominal input	Customer specific	kW
Efficiency load 30%	107	%
Operating pressure	6	bar
L x W x H	L on demand (upto 700) x204x255	mm
Flue connection Ø	Customer specific	mm
Weight	1,96 + L x 29,09	kg

Products are subject to changes. Therefore these dimensions and weights may differ from offered products.

DE|JA|TE|CH[®]
creators of comfort